

Horizon News



www.horizonbankne.com

Horizon Bank Remodel and Expansion

Horizon Bank has completed the first phase of the Waverly South Branch remodel this month.

The new lobby and drive-up is now open for business. The majority of the new furniture and workstations have been installed and, as with any project, just a few “clean-up” items remain to be done.

In mid-January you should see construction resume in the “old” part of the building; however, this should not affect our ability to serve you. We greatly appreciate your cooperation and patience with us during the construction of the new portion of the building. We hope that you agree it was worth the effort!

RECAP

The plan began with moving the house located on the corner of 140th and Heywood to its new location on 142nd Street and Cornhusker Highway. This area is now the new parking area. The current parking lot was excavated to provide a new basement and main floor with approximately 1,800 additional square feet of space. This new space connects with the existing

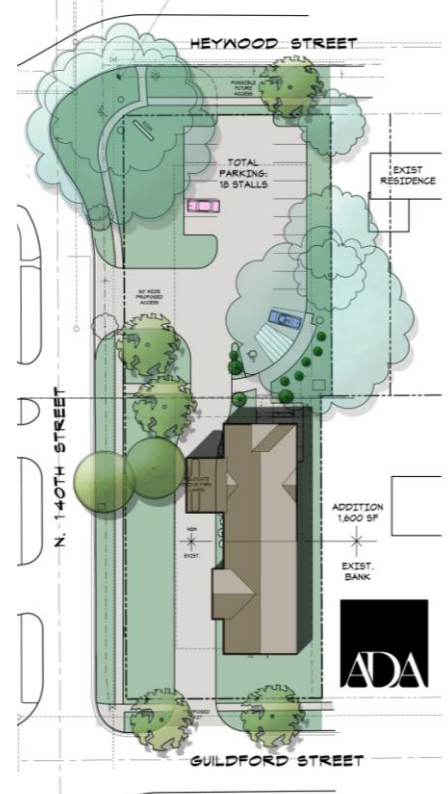
building which will be remodeled to match the new addition. The drive in lane was moved to the north and exits onto Guildford Street. This has greatly improved the traffic flow of our two drive in lanes and ATM. The result has been a much more spacious and inviting lobby, a total of six offices (we now have three), a conference room, safe deposit boxes, a larger break room and an additional bathroom on the first floor.

Services at the South Branch have expanded to include assistance customers with new installment loans. Safe Deposit Boxes will be available after the completion of the second phase.

We are happy to share with you that the NSure Agency will continue to occupy two offices and will have access to the new conference room. This should make your visits with them more comfortable. As always, products offered by NSure are not FDIC insured. If you haven't talked to the great people of NSure lately, be sure and stop by to say “hello.”

See the Photos link on the HOME page for the construction photo album.

Waverly South Branch Site Plan



“We will be doing a major renovation and addition at this site (South Branch Location) in Waverly.”

Janet Latimer, President

